

MLS Area 1B

Residential Statistics



August 2021

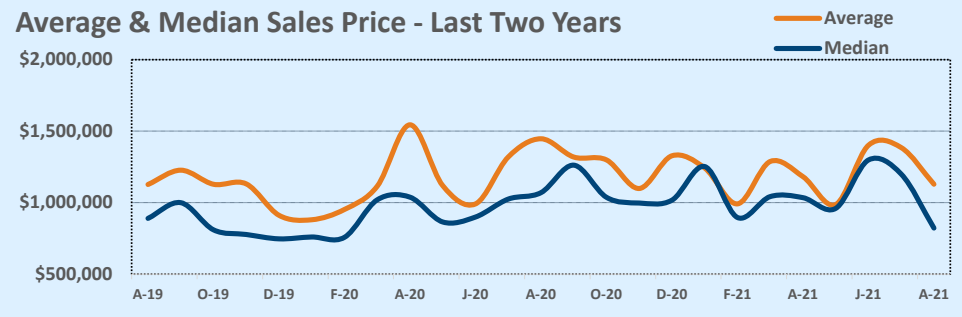
Listings	This Month			Year-to-Date		
	Aug 2021	Aug 2020	Change	2021	2020	Change
Single Family Sales	22	42	-47.6%	181	199	-9.0%
Condo/TH Sales	14	15	-6.7%	117	74	+58.1%
Total Sales	36	57	-36.8%	298	273	+9.2%
New Homes Only	--	3	--	12	14	-14.3%
Resale Only	36	54	-33.3%	286	259	+10.4%
Sales Volume	\$40,644,750	\$82,468,542	-50.7%	\$355,839,155	\$328,185,554	+8.4%
New Listings	34	51	-33.3%	328	455	-27.9%
Pending	2	41	-95.1%	11	292	-96.2%
Withdrawn	3	14	-78.6%	37	79	-53.2%
Expired	1	2	-50.0%	14	23	-39.1%
Months of Inventory	1.2	1.9	-40.1%	N/A	N/A	--

Price Range	This Month			Year-to-Date		
	New	Sales	DOM	New	Sales	DOM
\$149,999 or under	--	--	--	1	--	--
\$150,000- \$199,999	--	--	--	2	1	14
\$200,000- \$249,999	1	1	8	3	2	8
\$250,000- \$299,999	3	1	7	14	15	70
\$300,000- \$349,999	1	1	6	9	11	31
\$350,000- \$399,999	5	3	8	28	13	17
\$400,000- \$449,999	1	4	22	7	9	13
\$450,000- \$499,999	1	2	18	10	12	48
\$500,000- \$549,999	--	--	--	8	11	46
\$550,000- \$599,999	--	2	9	7	8	74
\$600,000- \$699,999	1	--	--	7	9	73
\$700,000- \$799,999	1	3	56	14	15	19
\$800,000- \$899,999	--	2	23	17	16	36
\$900,000- \$999,999	1	1	5	31	19	35
\$1M - \$1.99M	14	11	23	113	125	35
\$2M - \$2.99M	2	3	15	34	20	30
\$3M+	3	2	11	23	12	46
Totals	34	36	20	328	298	37

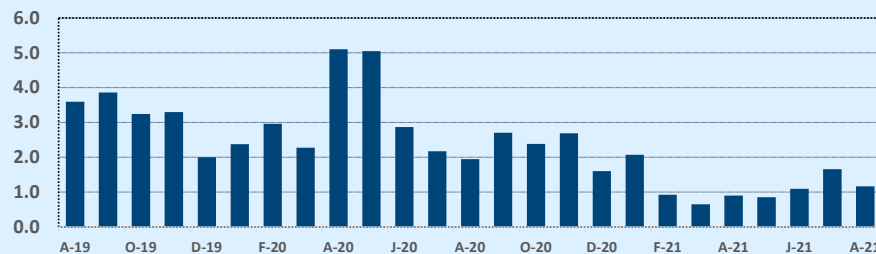
Average	This Month			Year-to-Date		
	Aug 2021	Aug 2020	Change	2021	2020	Change
List Price	\$1,140,941	\$1,543,979	-26.1%	\$1,169,033	\$1,253,717	-6.8%
List Price/SqFt	\$547	\$496	+10.1%	\$531	\$470	+13.2%
Sold Price	\$1,129,021	\$1,446,817	-22.0%	\$1,194,091	\$1,202,145	-0.7%
Sold Price/SqFt	\$549	\$481	+14.1%	\$547	\$456	+19.8%
Sold Price / Orig LP	99.4%	96.0%	+3.6%	101.7%	95.0%	+7.0%
Days on Market	20	37	-45.4%	37	45	-17.6%

Median	This Month			Year-to-Date		
	Aug 2021	Aug 2020	Change	2021	2020	Change
List Price	\$855,000	\$1,095,000	-21.9%	\$996,500	\$940,000	+6.0%
List Price/SqFt	\$533	\$485	+9.7%	\$507	\$453	+11.9%
Sold Price	\$822,500	\$1,070,000	-23.1%	\$1,055,000	\$925,000	+14.1%
Sold Price/SqFt	\$523	\$474	+10.2%	\$518	\$436	+18.8%
Sold Price / Orig LP	100.0%	98.0%	+2.0%	100.0%	96.0%	+4.2%
Days on Market	9	17	-47.1%	8	21	-61.9%

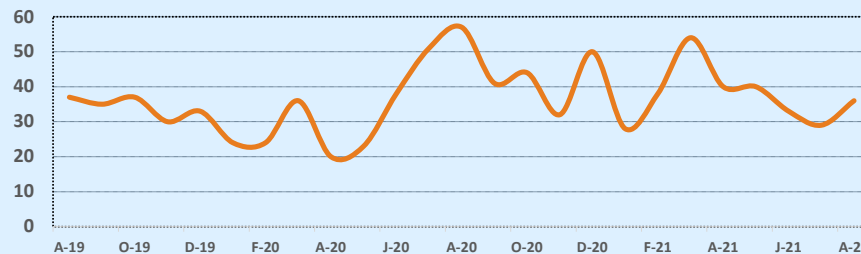
Average & Median Sales Price - Last Two Years



Months of Inventory - Last Two Years



Number of Sales - Last Two Years



Based on information from the Austin Board of REALTORS® (alternatively, from ACTRIS). Neither the Board nor ACTRIS guarantees or is in any way responsible for its accuracy. The Austin Board of REALTORS®, ACTRIS and their affiliates provide the MLS and all content therein "AS IS" and without any warranty, express or implied. Data maintained by the Board or ACTRIS may not reflect all real estate activity in the market.